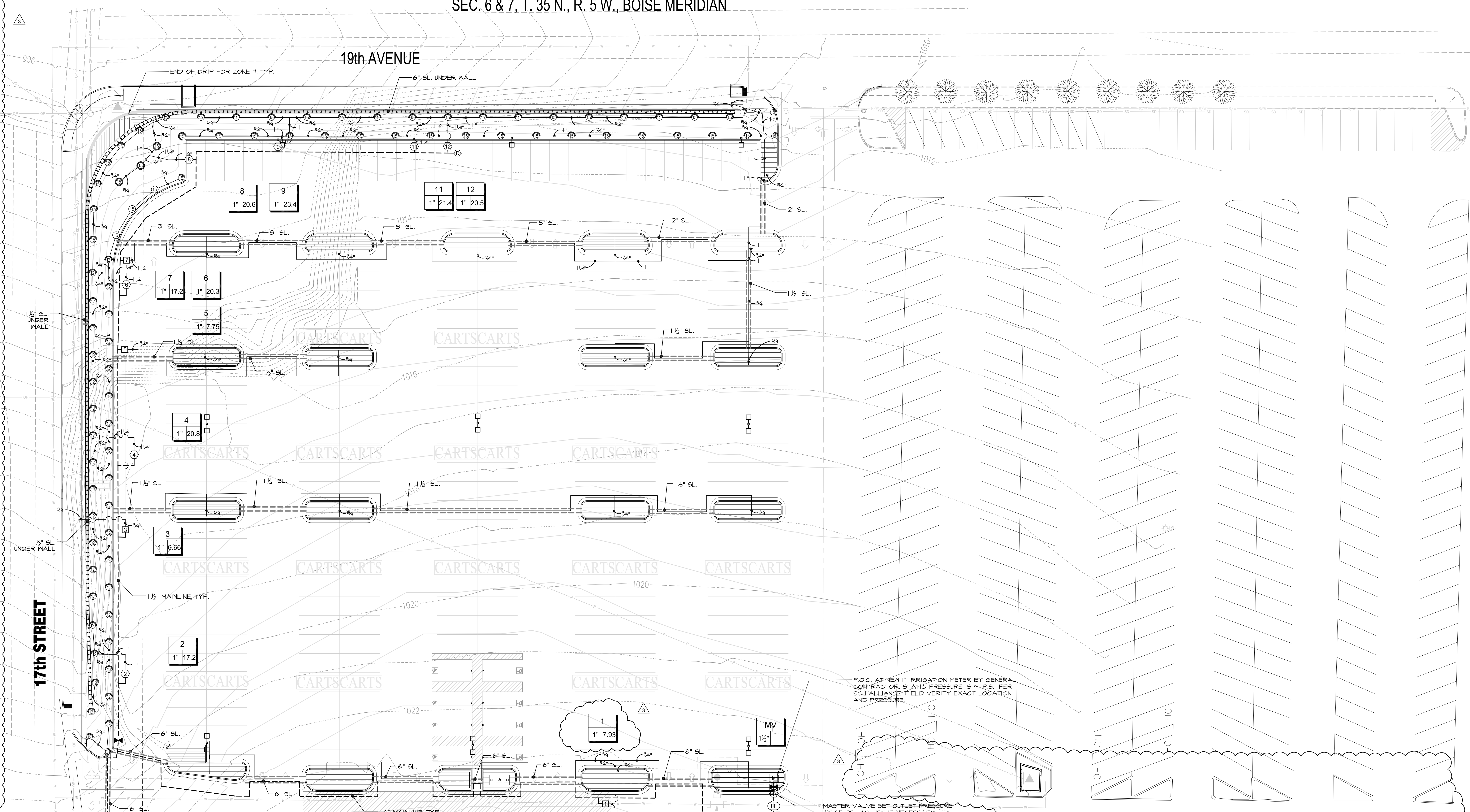


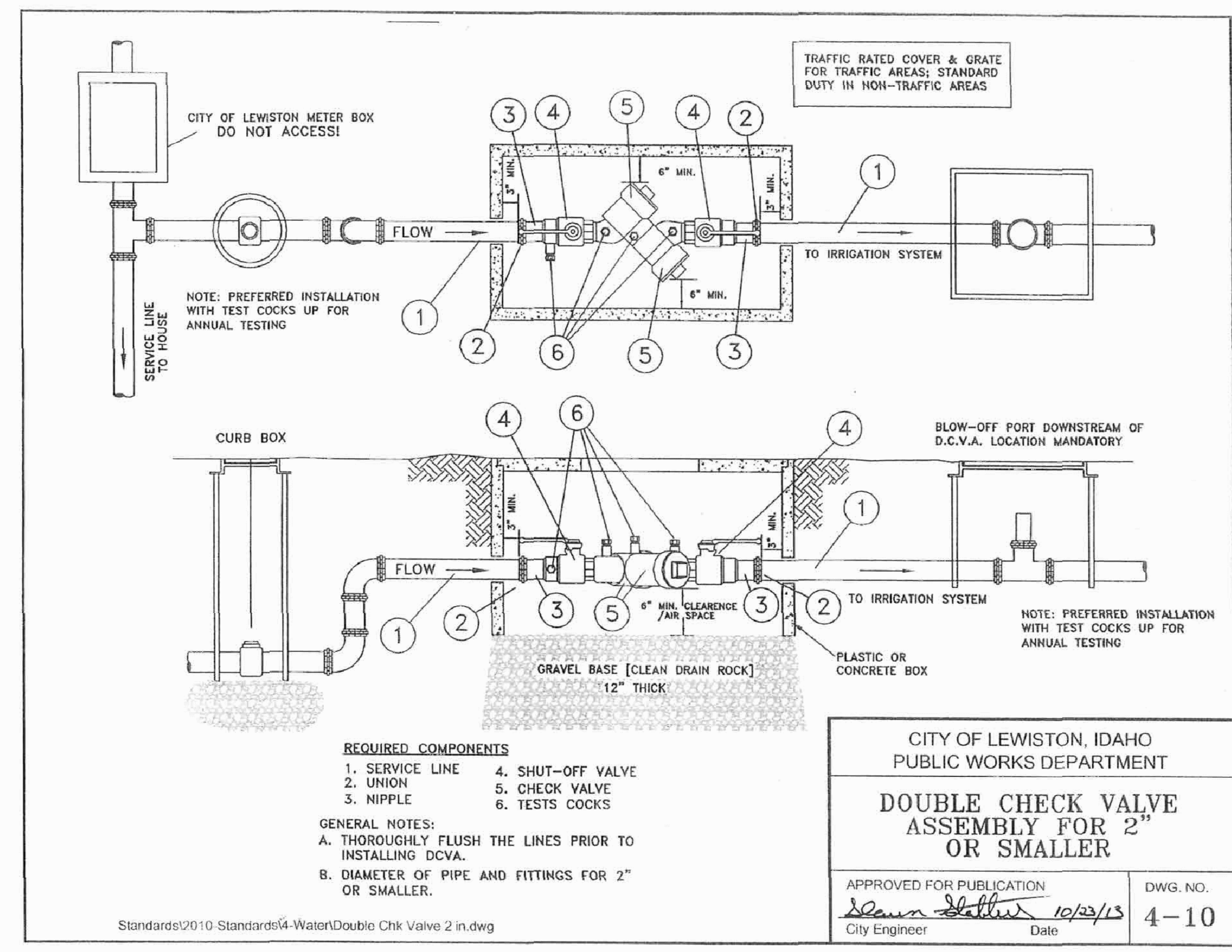
IRRIGATION SCHEDULE

SYMBOL	MANUFACTURER/MODEL/DESCRIPTION	PSI
⊙	HANTER PROS-12-CV 12" RADIUS SHRUB SPRAY, 12.0" POP-UP, WITH DRAIN CHECK VALVE. CO-MOLDED W/PER SEAL WITH UV RESISTANT MATERIAL.	50
⊙	HANTER PROS-12-CV 15" RADIUS SHRUB SPRAY, 12.0" POP-UP, WITH DRAIN CHECK VALVE. CO-MOLDED W/PER SEAL WITH UV RESISTANT MATERIAL.	50
⊙	HANTER PROS-12-CV ADJ SHRUB SPRAY, 12.0" POP-UP, WITH DRAIN CHECK VALVE. CO-MOLDED W/PER SEAL WITH UV RESISTANT MATERIAL.	50
⊙	HANTER MP2000 PROS-04-PRS40-CV TURF ROTATOR, 4" (10.16 CM) POP-UP WITH FACTORY INSTALLED CHECK VALVE. PRESSURE REGULATED TO 40 PSI (2.76 BAR). MP ROTATOR NOZZLE ON PRS40 BODY. K-SLACK ADJ. ARC 90-210, 6-GREEN ADJ. ARC 210-270, R-RED 360 ARC.	40
⊙	HANTER MP1000 PROS-12-PRS40-CV SHRUB ROTATOR, 12" (30.48 CM) POP-UP WITH CHECK VALVE. PRESSURE REGULATED TO 40 PSI (2.76 BAR). MP ROTATOR NOZZLE. M-HARMON ADJ. ARC 90-210, 6-GREEN ADJ. ARC 210-270, R-RED 360 ARC ON PRS40 BODY.	40
⊙	HANTER MP3000 PROS-12-PRS40-CV SHRUB ROTATOR, 12" (30.48 CM) POP-UP WITH CHECK VALVE. PRESSURE REGULATED TO 40 PSI (2.76 BAR). MP ROTATOR NOZZLE. M-HARMON ADJ. ARC 90-210, 6-GREEN ADJ. ARC 210-270, R-RED 360 ARC ON PRS40 BODY.	40
⊙	HANTER MP3000 PROS-12-PRS40-CV SHRUB ROTATOR, 12" (30.48 CM) POP-UP WITH CHECK VALVE. PRESSURE REGULATED TO 40 PSI (2.76 BAR). MP ROTATOR NOZZLE. M-HARMON ADJ. ARC 90-210, 6-GREEN ADJ. ARC 210-270, R-RED 360 ARC ON PRS40 BODY.	40
X	HANTER MP CORNER PROS-12-PRS40-CV SHRUB ROTATOR, 12" (30.48 CM) POP-UP WITH FACTORY INSTALLED CHECK VALVE. PRESSURE REGULATED TO 40 PSI (2.76 BAR). MP ROTATOR NOZZLE. T-TURGO/USE ADJ. ARC 45-105 ON PRS40 BODY.	40
⊙	HANTER MP STRIP PROS-12-PRS40-CV SHRUB ROTATOR, 12" (30.48 CM) POP-UP WITH FACTORY INSTALLED CHECK VALVE. PRESSURE REGULATED TO 40 PSI (2.76 BAR). MP ROTATOR NOZZLE. LST-IVORY LEFT STRIP, SST-BROWN SIDE STRIP, RST-COPPER RIGHT STRIP, ON PRS40 BODY.	40
⊙	HANTER IGV-101-25 DRIP CONTROL ZONE KIT, 1" ICV GLOBE VALVE WITH 1" HY100 FILTER SYSTEM. PRESSURE REGULATION, 25PSI, FLOW RANGE, 2 GPM TO 20 GPM. 180 MESH STAINLESS STEEL SCREEN.	
⊙	AREA TO RECEIVE DRIPLINE NETA-FIM TFCV-06-18 (18) TECHLINE PRESSURE COMPENSATING LANDSCAPE DRIPLINE WITH CHECK VALVE. 0.6GPH EMITTERS AT 18" O.C. DRIPLINE LATERALS SPACED AT 18" O.C. WITH EMITTERS OFFSET FOR TRIANGULAR PATTERN, TMM.	
⊙	HANTER IGV-9-ADJ 1" 1/4" PLASTIC ELECTRIC MASTER VALVE WITH ADJUSTABLE PRESSURE REGULATOR, GLOBE CONFIGURATION, WITH NPT THREADED INLET/OUTLET.	
⊙	RAIN BIRD 3-RC 3/4" BRASS QUICK-COUPLING VALVE, WITH CORROSION-RESISTANT STAINLESS STEEL SPRINGS, THERMOPLASTIC RUBBER COVER, AND 1-PIECE BODY.	
X	SHUT OFF VALVE B 1 1/4" (107-HOOD SERIES) BRASS BALL VALVE WITH BRASS UNIONS (MATCH LINE SIZE)	
⊙	DRAIN VALVE CHAMPION 200-075, BRASS ANGLE VALVE	
⊙	FEBCO 850 1" DOUBLE CHECK BACKFLOW PREVENTION	
⊙	HANTER ACC-2400 24 STATION OUTDOOR MODULAR CONTROLLER, WITH TWO ACM-600 MODULE, HIGH-END COMMERCIAL USE, METAL CABINET.	
⊙	HANTER P85 WIRELESS SOLAR RAIN FREEZE SENSOR WITH OUTDOOR INTERFACE, CONNECTS TO HANTER PCC, PRO-C, AND I-CORE CONTROLLERS, INSTALL AS NOTED, INCLUDES 10 YEAR LITHIUM BATTERY AND RUBBER MODULE COVER, AND SUTTER MOUNT BRACKET.	
M	WATER METER 1" PER SCJ ALLIANCE	
---	IRRIGATION LATERAL LINE, PVC CLASS 200 SDR 21 PVC CLASS 200 IRRIGATION PIPE.	
---	IRRIGATION MAINLINE, PVC SCHEDULE 40 PVC SCHEDULE 40 IRRIGATION PIPE.	
---	PIPE SLEEVE, PVC SCHEDULE 40 BURY @ 24" BELOW GRADE	
#	Valve Number	
#	Valve Flow	
#	Valve Size	



SHEET NOTES

- SEE DETAILS AND SPECIFICATIONS FOR ADDITIONAL INFORMATION.
- PLAN IS DIAGNOMATIC. ALL PIPING, LATERALS, AND WIRE TO BE LOCATED IN BED OR LAWN AREAS WHERE APPROPRIATE.
- PIPE SIZES ARE TO REMAIN CONSTANT BETWEEN PIPE SIZE CALL-OUTS. PIPES ARE LABELED TO SHOW PIPE SIZE ONLY (%).
- ALL IRRIGATION HEADS LOCATED IN LAWN AREAS SHALL BE 4" POP-UPS AND HEADS IN SHRUB AREAS SHALL BE 12" POP-UPS.
- ALL PIPES AND SLEEVES UNDER PAVED AREAS SHALL BE 24" DEEP. ALL MAINLINE SHALL BE 18" DEEP IN ALL UNPAVED AREAS, 24" IN PAVED AREAS. ALL LATERALS SHALL BE 12" DEEP IN ALL UNPAVED AREAS AND 24" DEEP IN PAVED AREAS.
- LOCATE ALL MAINLINES WITHIN THE PROJECT LIMITS.
- ALL WORK SHALL BE PERFORMED TO THE SATISFACTION OF THE LANDSCAPE ARCHITECT/OWNER.



REVISIONS

1	ON SITE FROM TIG 03-23-14
2	ON SITE FROM TIG 04-28-14
3	OFF SITE FROM TIG 04-08-14

ARCH. PROJECT NO. 1328

DRAWN BY GRANITHAM

CHECKED BY J MCFARLAND

SUBMITTAL DATES

12/31/13	00/00/00	00/00/00
----------	----------	----------

OTH DATE 02/10/14

CRITERIA SET 97KW/97KA

JEFFREY R. GLANDER & ASSOCIATES, PLLC

2382 CARROLL ST. SUITE 200, LEWISTON, IDAHO 83501

SCJ ALLIANCE CONSULTING SERVICES

2382 CARROLL ST. SUITE 200, LEWISTON, IDAHO 83501

09/04/2014

WINCO STORE NO. 128
S.E.C. 19TH AVE. & 17TH ST.
LEWISTON, IDAHO 83501

WinCo FOODS

SHEET TITLE
NORTH IRRIGATION PLAN

SHEET
LS-03

BENCHMARK
PK NAIL LOCATED NEAR THE SW CORNER OF BUILDING, AS IDENTIFIED ON SHEET 7 OF ALTA SURVEY BY KM ENGINEERING, OCT. 4, 2013 (NAVD 85 DATUM)

BASIS OF BEARING
BASIS OF BEARING IS THE ALTA/ACSM SURVEY FOR THE LEWISTON CENTER PARTNERSHIP BY DANIEL L. HAINREST, PLS 8/06 DATED AUGUST 17, 1999.

CALL BEFORE YOU DIG
THE CONTRACTOR SHALL BE FULLY RESPONSIBLE FOR THE LOCATION AND PROTECTION OF ALL EXISTING UTILITIES. THE CONTRACTOR SHALL VERIFY ALL UTILITY LOCATIONS PRIOR TO CONSTRUCTION BY CALLING THE UNDERGROUND LOCATE LINE 811 OR 1-800-342-1585 A MINIMUM OF 48 HOURS PRIOR TO ANY EXCAVATION.